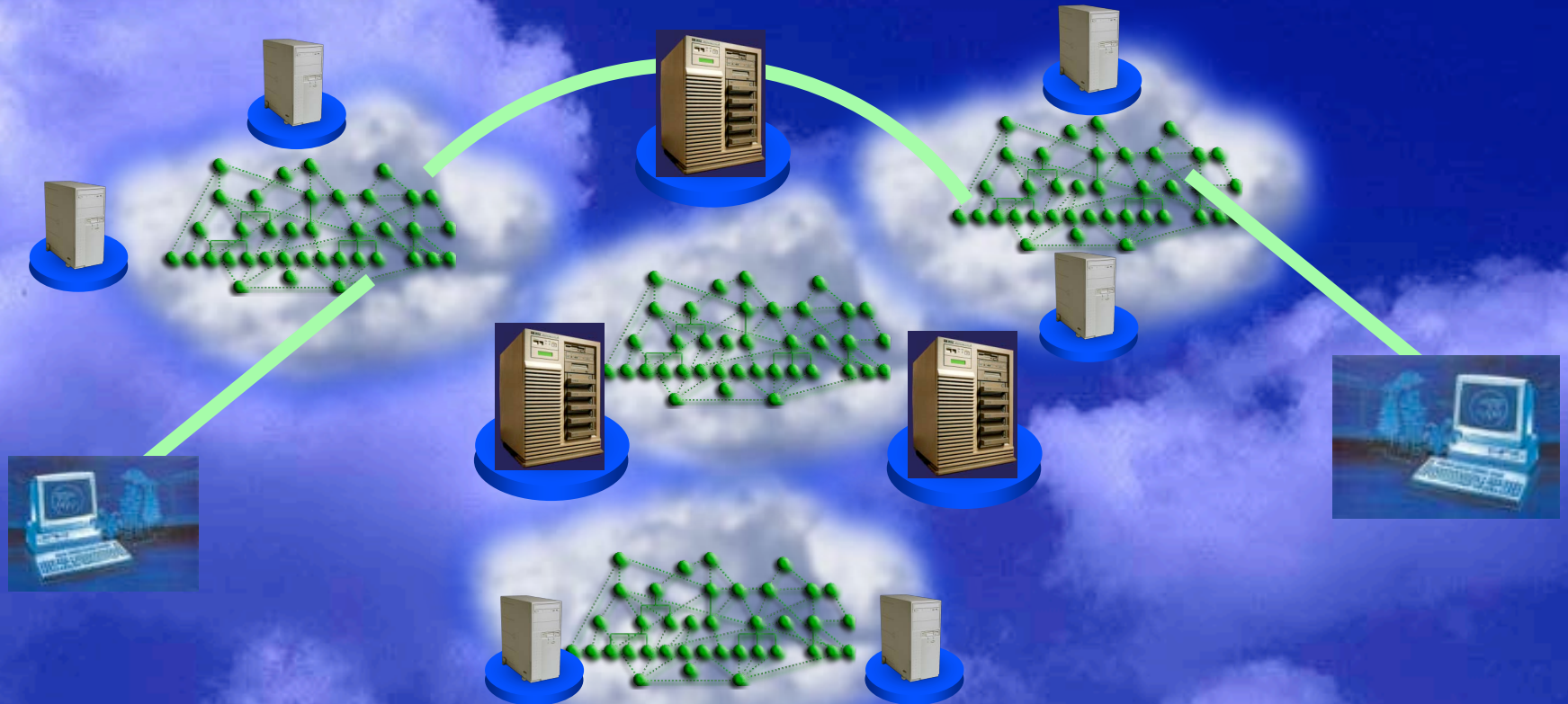


The **NEW** Net

Pat Gelsinger
Chief Technology Officer

Computational Services Overlay



Platform for new services

Infrastructure services

End-user services

Network-aware, adaptive

The background of the slide is a stylized world map with a blue and green color scheme. In the center, there is a circular logo with a dark blue border. Inside the circle, there are four horizontal green lines, each with a small dark blue dot at its end. The logo is positioned over the Atlantic Ocean. Below the logo, the word "PLANETLAB" is written in a large, bold, sans-serif font. The letters "P", "L", "A", "N", "E", "T", "L", "A", and "B" are green, while the letters "P", "L", "A", "N", "E", "T", "L", "A", and "B" are dark blue.

PLANETLAB

www.planet-lab.org

Other brands and names are the property of their respective owners.

A world map with a blue background and green landmasses. Red spheres representing PlanetLab nodes are clustered in North America, Europe, and East Asia. The map is split vertically to compare the 2002 and 2004 distributions.

PlanetLab 2002

101 Machines

41 Sites

7 Countries

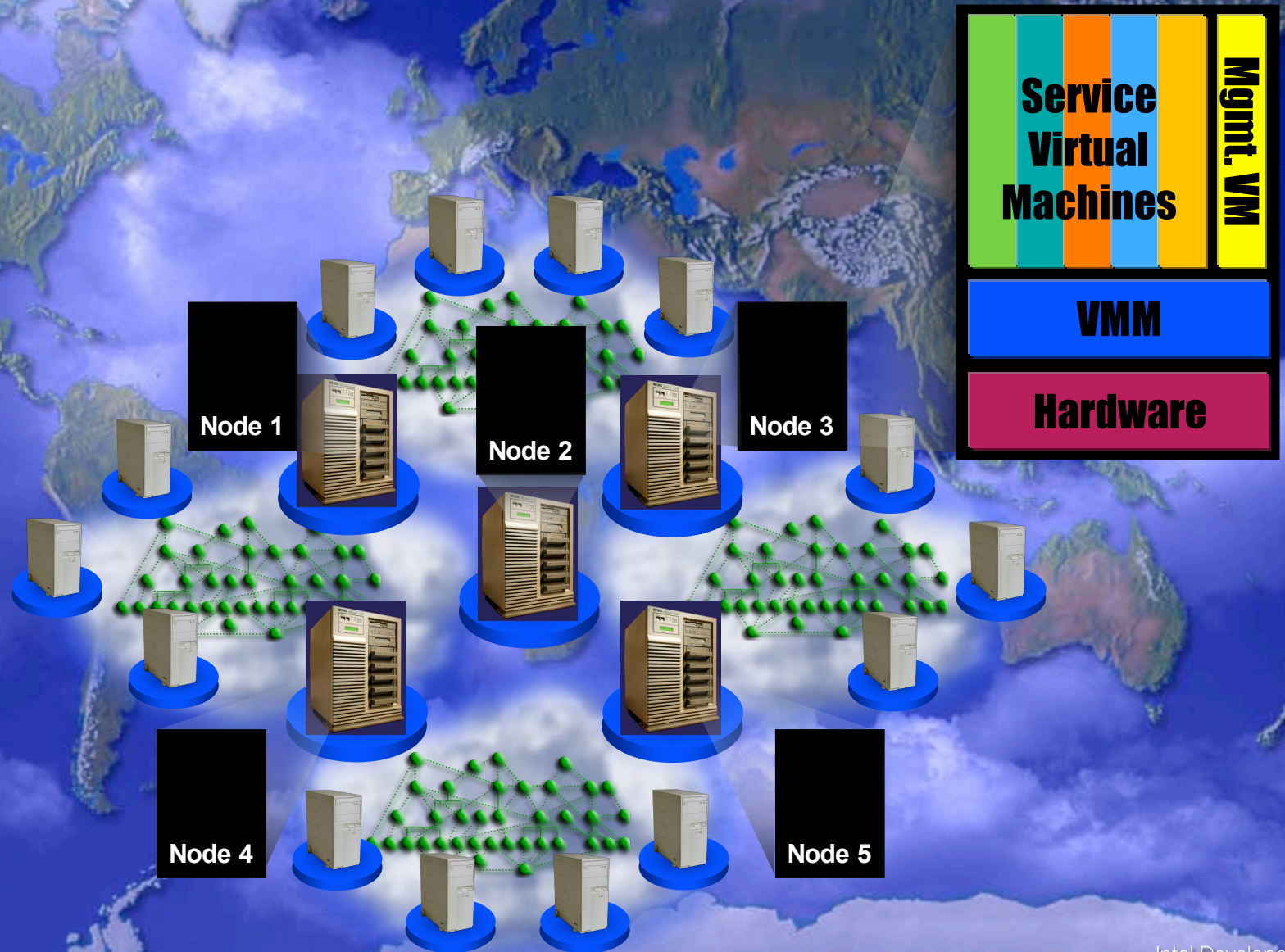
PlanetLab 2004

440 Machines

194 Sites

22 Countries

PlanetLab Service Architecture



PlanetLab Services are Running

Infrastructure Services & End-user Services

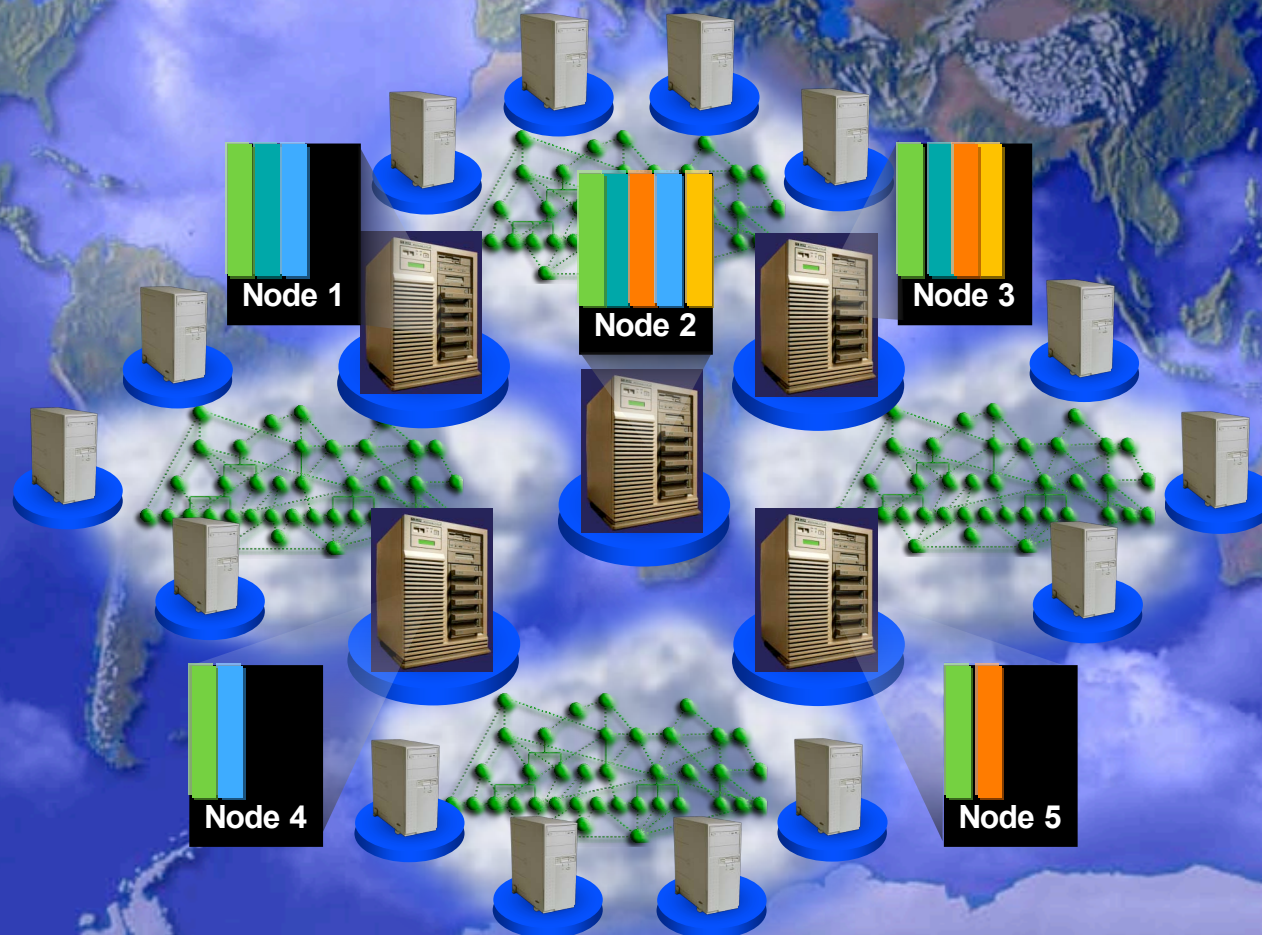
Event
Processing

Network
Mapping

Distributed
Hash Tables

Content
Distribution

Web Casting



intel

Computational Services Overlay

Intel Developer
FORUM

UK

U of T

URCS
1011001101010

Berkeley
University of California

Computer Science
UNIVERSITY OF BRITISH COLUMBIA

UPPSALA
UNIVERSITET

UNIVERSITY OF
TECHNOLOGY SYDNEY

UNIVERSITY OF CALIFORNIA, SANTA BARBARA

The University of
KANSAS

Princeton University

STANFORD
COMPUTER SCIENCE

University of Washington
Computer Science & Engineering

PURDUE
UNIVERSITY

UTCS Department of Computer Sciences
The University of Texas at Austin

New York University

UMASS

LANCASTER
UNIVERSITY

berlin

JOHNS HOPKINS
UNIVERSITY

Columbia University Department of Computer Science
Fu Foundation School of Engineering and Applied Science

RICE
COMPUTER
SCIENCE

Rensselaer

Computer Science Department

111 Cummington street, Boston MA 02215 Tel/Fax: (617) 353-8919/6457

Carnegie Mellon
SCHOOL OF COMPUTER SCIENCE

香港中文大學
The Chinese University of Hong Kong

NORTHWESTERN
UNIVERSITY

國立清華大學
資訊工程學系
<http://www.cs.nthu.edu.tw/>

BERKELEY LAB

INRIA
service informatique

Georgia Institute
of Technology

HARVARD UNIVERSITY DIVISION OF
ENGINEERING AND APPLIED SCIENCES

UT

UNIVERSITY OF
CANTERBURY

Institute of Information Science
Academia Sinica

Electrical Engineering and Computer Science
EECS College of Engineering
University of Michigan

UNIVERSITY OF MARYLAND

UNIVERSITY of VIRGINIA

UCSD

UNIVERSITY OF
CAMBRIDGE

WAYNE STATE
UNIVERSITY

DEPARTEMENT INFORMATIK

MIT Laboratory for Computer Science

THE UNIVERSITY OF ARIZONA

UCLA

THE STATE UNIVERSITY OF NEW JERSEY
RUTGERS

cs.duke.edu

Other brands and names are the property of their respective owners.



i n v e n t

intel®

Google™



AT&T

NEC



CANARIE



INTERNET®



RNP

Other brands and names are the property of their respective owners.

Our Vision for the New Net

Packet Communication → Service Hosting Platform

Routers → Routers/Servers/Disks

End-to-end → Edge → Everywhere

The NEW Net